



Specifications 规格

Class of Operation 保持特性 :aR

Standard 标准 : UL248-13

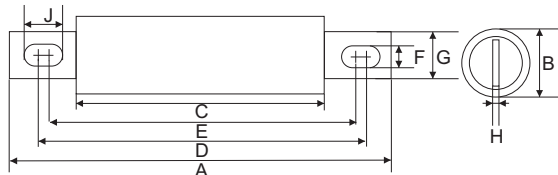
Rating 电气参数: Amps: 5A-800A
Volts: 500V ac/dc

Interrupting Capacity 分断能力: 20kA @500V dc
100kA @500V ac

Dimensions 尺寸 (Unit: mm)

Rated Current	Type	A±1.5	B±1	C±1.5	D±1	E±1	F±0.5	G±1	H±1	J±1.5
5-60A	EV500	82	20	40	66	57	8.5	15	3	13
65-100A		94	26	46	75	66	8.5	20	3	13
125-200A	NHV5	92	31	46	75	64	8.5	25	6	14
225-400A		110	38	53	91	72	10.5	25	6	20
450-600A	NHV5L	110	51	53	91	72	10.5	40	6	20
700-800A		161	63	53	126	87	13.5	50	10	33

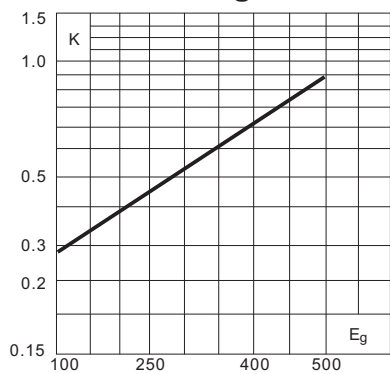
Fig. 1: 5-800 Amp Range



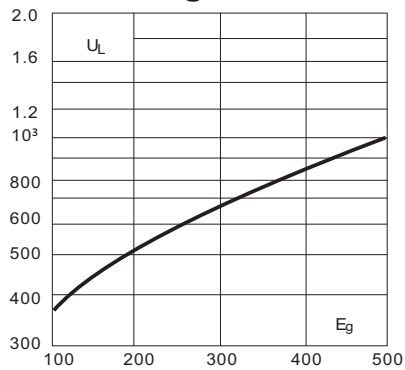
Electrical Characteristics 电气特性

Type 型号	Rated Current RMS-Amps 额定电流	I ² t(A ² Sec)			Part Number 料号	Safety Approvals 安全认证
		Pre-arc 弧前	Clearing at 500V 熔断	Watts Loss 功耗		
EV500	5	18	80	6	EV500-5A	●
	10	20	87	6.5	EV500-10A	●
	15	24	95	6.5	EV500-15A	●
	20	28	110	7	EV500-20A	●
	30	33	120	7	EV500-30A	●
	35	36	145	8	EV500-35A	●
	40	80	310	7.5	EV500-40A	●
	45	110	440	7.5	EV500-45A	●
	50	140	660	7.5	EV500-50A	●
	60	220	880	9.9	EV500-60A	●
	70	225	885	10.6	EV500-70A	●
	80	320	1380	12.7	EV500-80A	●
	90	370	1570	15	EV500-90A	●
100	790	1960	17	EV500-100A	●	
NHV5	125	820	3480	25	NHV5-125A	●
	150	1130	4560	30	NHV5-150A	●
	175	1500	6140	35	NHV5-175A	●
	200	1950	8440	40	NHV5-200A	●
	225	4680	23100	39	NHV5-225A	●
	250	6400	32000	41	NHV5-250A	●
	275	8000	40100	46	NHV5-275A	●
	300	9900	49600	51	NHV5-300A	●
	325	13820	63600	53	NHV5-325A	●
	350	14650	72600	58	NHV5-350A	●
400	19400	96500	65	NHV5-400A	●	
NHV5L	450	24900	126700	74	NHV5L-450A	●
	500	29350	148800	84	NHV5L-500A	●
	600	41550	205500	108	NHV5L-600A	●
	700	55200	297600	120	NHV5L-700A	-
	800	76410	408500	129	NHV5L-800A	-

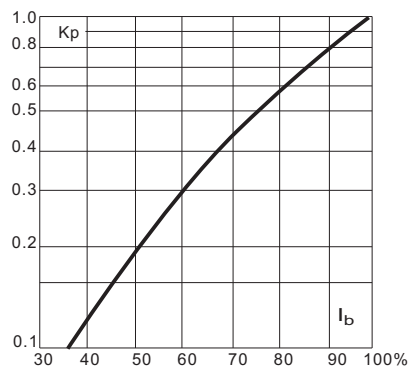
Total Clearing I^2t 熔断 I^2t



Arc Voltage 弧前电压



Power Losses 功耗



Time-Current Curve 时间-电流曲线

