



Specifications 规格

Class of Operation 保持特性 :aR

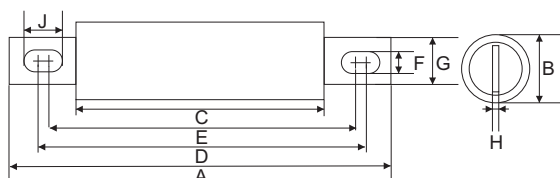
Standard 标准 : UL248-13

Rating 电气参数 : Amps: 35A- 600A
Volts: 250V ac/dc


Interrupting Capacity 分断能力: 20kA @250V dc
100kA @250V ac

Dimensions 尺寸 (Unit: mm)

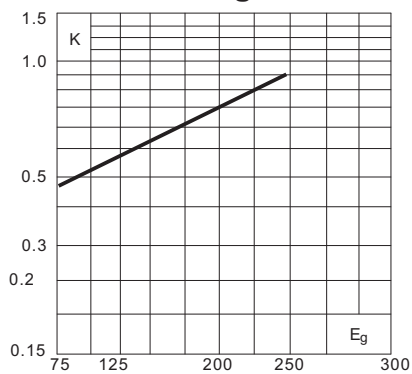
Rated Current	Type	A±1.5	B±1	C±1.5	D±1	E±1	F±0.5	G±1	H±1	J±1.5
35-60A	EV200	81	20	40	65	56	8.5	15	3	13
65-100A		88	26	40	68	59	8.5	20	3	13
125-200A	NHV2	85	31	40	68	57	8.5	25	6	14
225-400A		97.5	38	40	78	59	10.5	25	6	20
450-600A	NHV2L	97.5	51	40	78	59	10.5	40	6	20



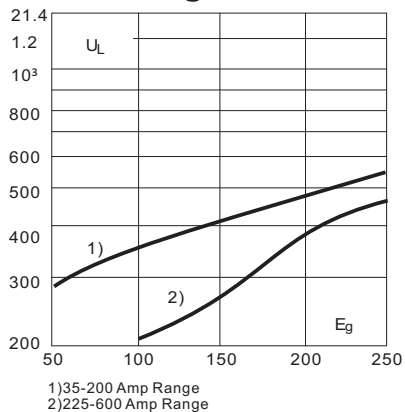
Electrical Characteristics 电气特性

Type 型号	Rated Current RMS-Amps 额定电流	I ² t(A ² Sec)			Part Number 料号	Safety Approvals 安全认证 
		Pre-arc 弧前	Clearing at 250V 熔断	Watts Loss 功耗		
EV200	35	47	207	4	EV200-35A	●
	40	57	282	5	EV200-40A	●
	45	76	355	5.5	EV200-45A	●
	50	97	468	5.7	EV200-50A	●
	60	133	681	7	EV200-60A	●
	70	317	1288	8	EV200-70A	●
	80	408	1684	8.5	EV200-80A	●
	90	553	2230	9.6	EV200-90A	●
	100	703	2899	12.1	EV200-100A	●
NHV2	125	1085	4413	11.9	NHV2-125A	●
	150	1539	6325	17.7	NHV2-150A	●
	175	2083	8556	20.9	NHV2-175A	●
	200	2076	10920	23.5	NHV2-200A	●
	225	3050	13524	26	NHV2-225A	●
	250	4801	16290	29	NHV2-250A	●
	275	4484	19656	30	NHV2-275A	●
	300	5700	24843	31	NHV2-300A	●
	350	10176	44226	37	NHV2-350A	●
	400	13920	60812	42	NHV2-400A	●
NHV2L	450	21216	90900	47	NHV2L-450A	●
	500	26880	116480	52	NHV2L-500A	●
	600	39456	172960	59	NHV2L-600A	●

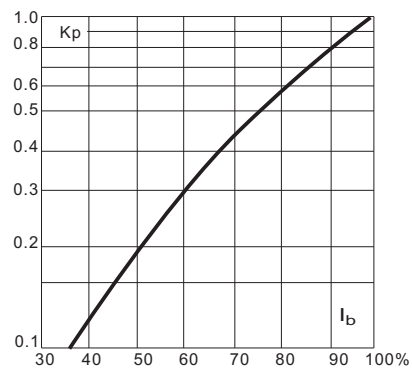
Total Clearing I²t 熔断 I²t



Arc Voltage 弧前电压



Power Losses 功耗



Time-Current Curve 时间-电流曲线

